

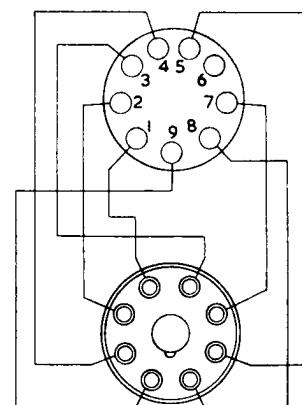
ADAPTORS FOR CERTAIN TYPES OF VALVES

The holders and plugs are viewed from beneath.

Connecting wires should be drawn in to be as short as possible, and should be in good quality insulation sleeving. When making adaptor No. 6, three lengths of 14 gauge T.C. wire covered with sleeving should be used. Bare parts of the wires must not touch each other, or the metal case of the instrument. A spot of red paint may be placed on the anode lead for identification.

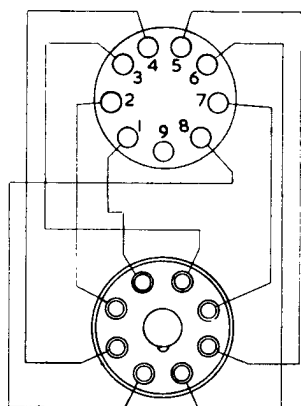
Information on the use of these adaptors is given on page 9.

1 British 9-pin holder
Top cap to top-cap lead



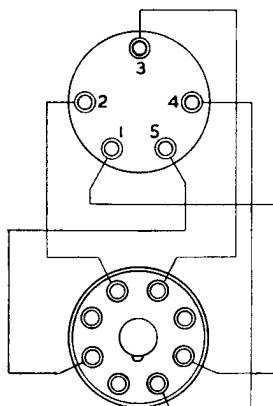
International Octal plug
TP22

2 British 9-pin holder
Top cap to top-cap lead



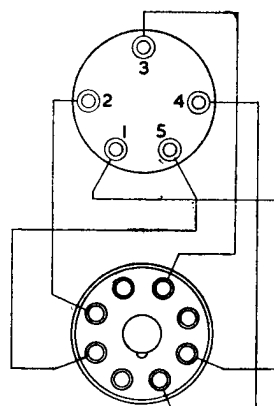
International Octal plug
AC/TP, TP2620

3 UX small 5-pin holder
Top cap to top-cap lead



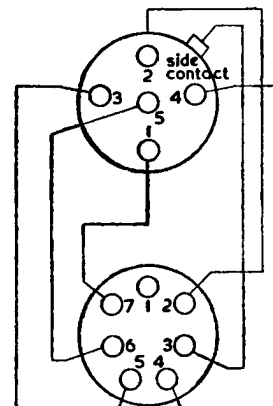
International Octal plug
QV05-25, 807

4 UX 5-pin holder



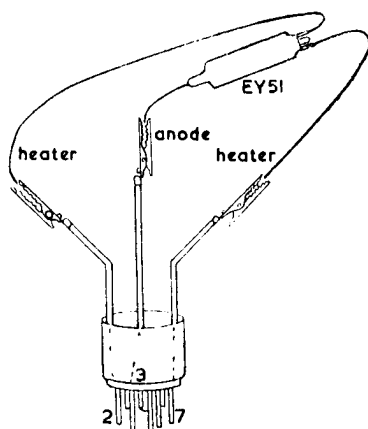
International Octal plug
36, 37, 38, 39/44, 46, 47, 76, 84/6Z4

5 British 5-pin holder

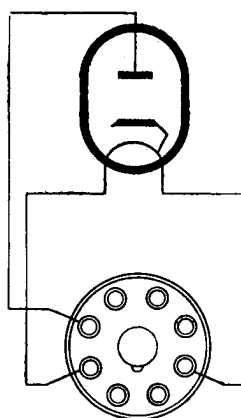


British 7-pin plug
MKT4, PEN4VA (5-pin using 7-pin card),
APP4A

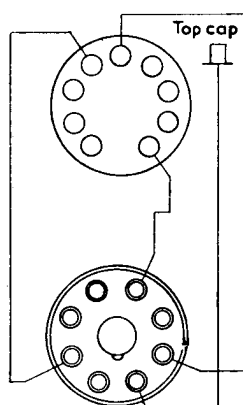
6 Wire-in EY51 Valve



International Octal plug
R16, R12, EY51, SU61, U43, U151, U25, U37, IT2, 6W2, 6X2

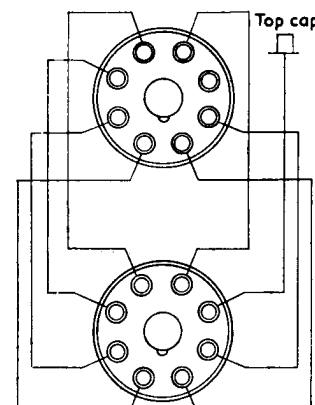


7 B9A (Noval) holder
Top cap to plug pin 8



International Octal plug
PY81, U153, U329, 17Z3, EY81, PY83

8 International Octal holder
Top cap to plug pin 6



International Octal plug
U282, U301