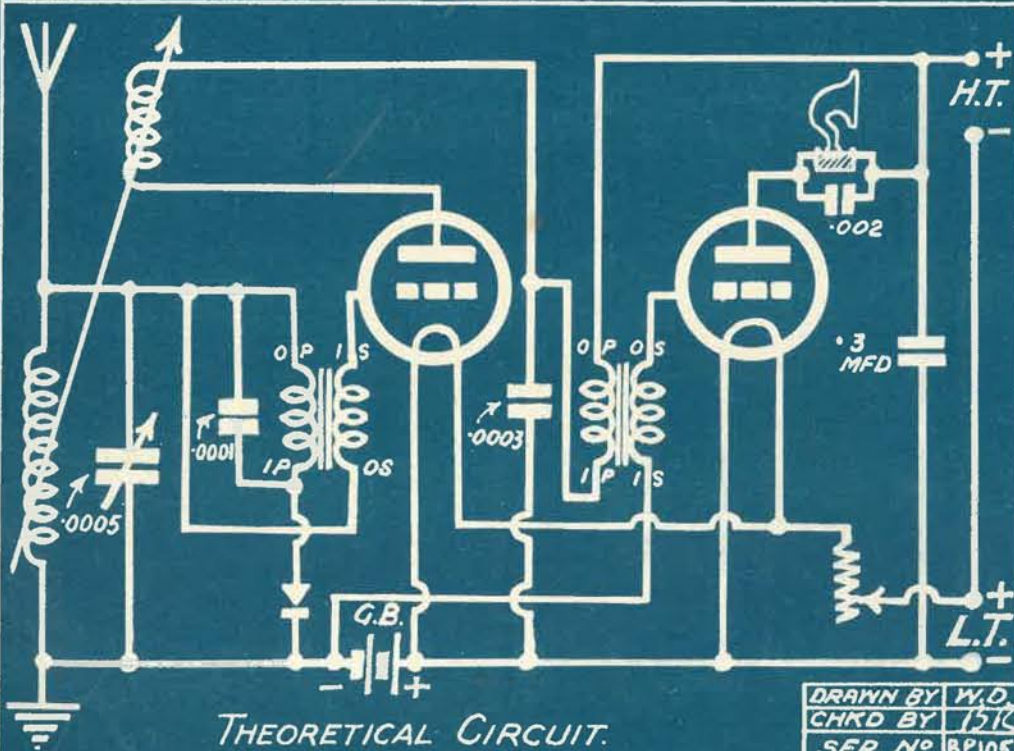
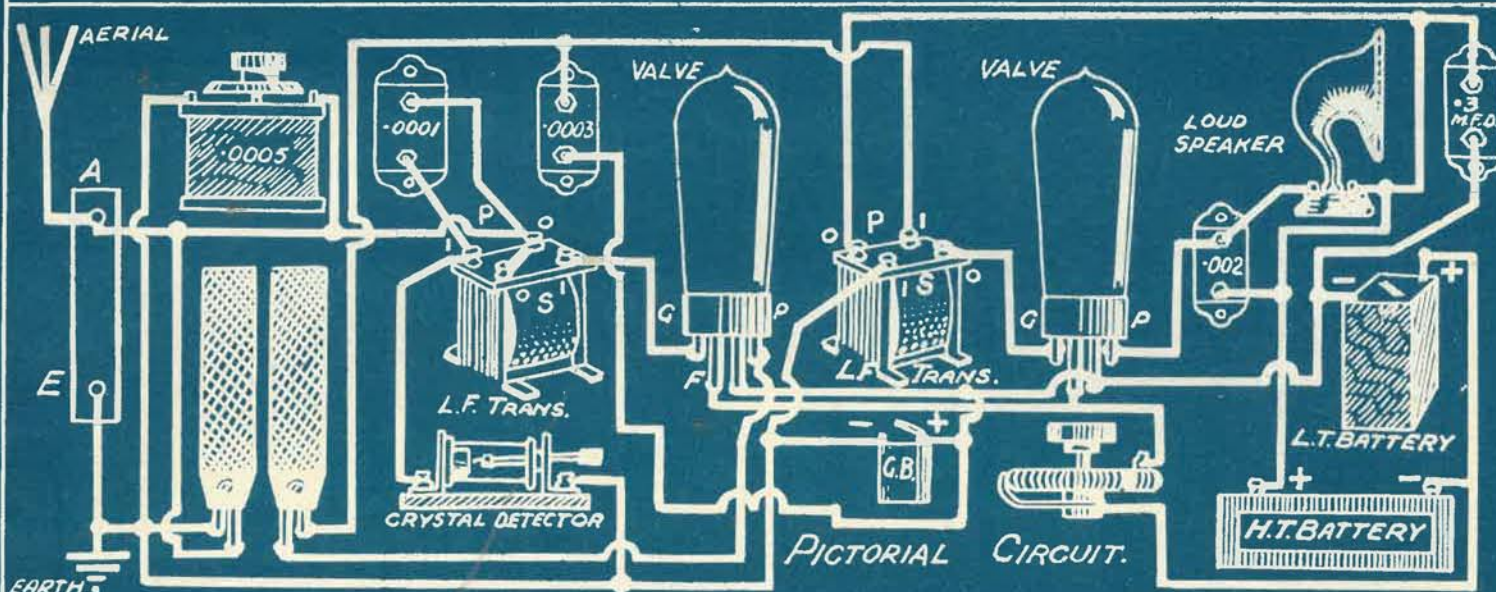


The "P.W." Blue Print Circuit, No. 22 "The Guaranteed Reflex." 6d.

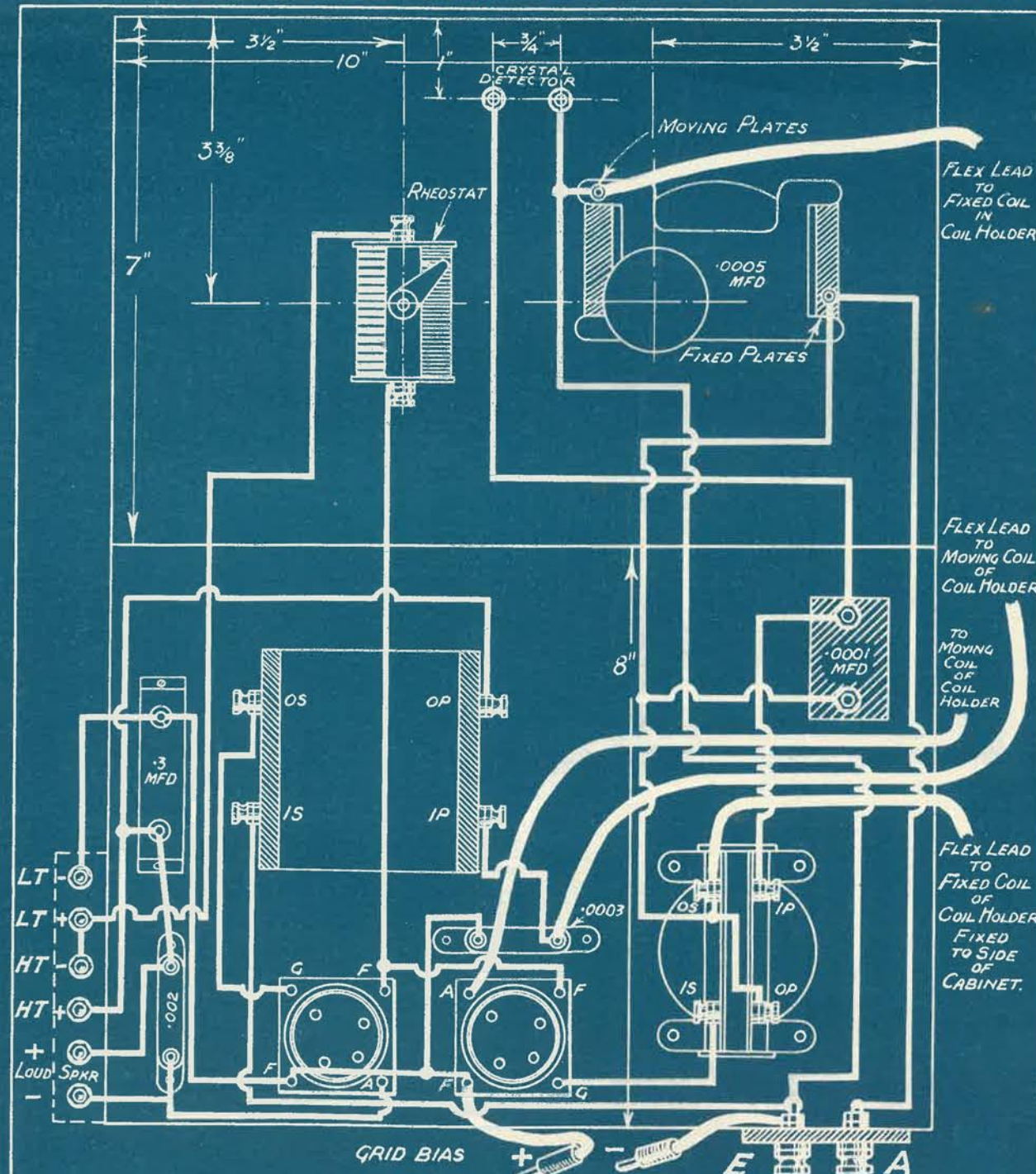


The "P.W." Blue Print Circuit, No. 22
"The Guaranteed Reflex."

- List of Components.**
- Panel, 7 in. x 10 in. } and Cabinet
 - Baseboard, 8 in. x 10 in. } to fit.
 - 1 Variable Condenser, .0005 mfd.
 - 1 Rheostat.
 - 1 L.F. Transformer (First stage).
 - 1 " " (Second stage).
 - 1 2-Coil Holder.
 - 2 Valve Holders (anti-microphonic).
 - 1 Fixed Condenser, .3 mfd.
 - 1 " " .0001 "
 - 1 " " .0003 "
 - 1 " " .0002 "
 - 1 Crystal detector, wander plugs, wire, screws, transfers, etc.
 - 1 Six-terminal Strip.
 - 1 Two-terminal Strip.

- Accessories.**
- 2 Valves (L.F. power type).
 - 1 L.T. Battery } To suit valves.
 - 1 H.T. " }
 - 1 G.B. " }
 - 2 Coils (A 35/50, Reaction 50/60) (for 5 XX: 150 and 200 turns).
 - 1 Loud speaker.

DRAWN BY W.D.
CHKD BY 1510
SER. NO. BP105



DRAWN BY W.D.
CHKD BY 1510
SER. NO. BP106

The "P.W." Blue Print Circuit, No. 22. "The Guaranteed Reflex."

This popular receiver is very simply controlled, capable of giving tremendous volume, with quality far above the average. As L.F. transformer design is not standard, it may be necessary to reverse O.P. and I.P. (and/or O.S. and I.S.) on one or both L.F. transformers. If the set fails to oscillate, the effect of reversing the connections to the reaction coil should be tried. Correct adjustment of grid bias is essential to the successful operation of this set.