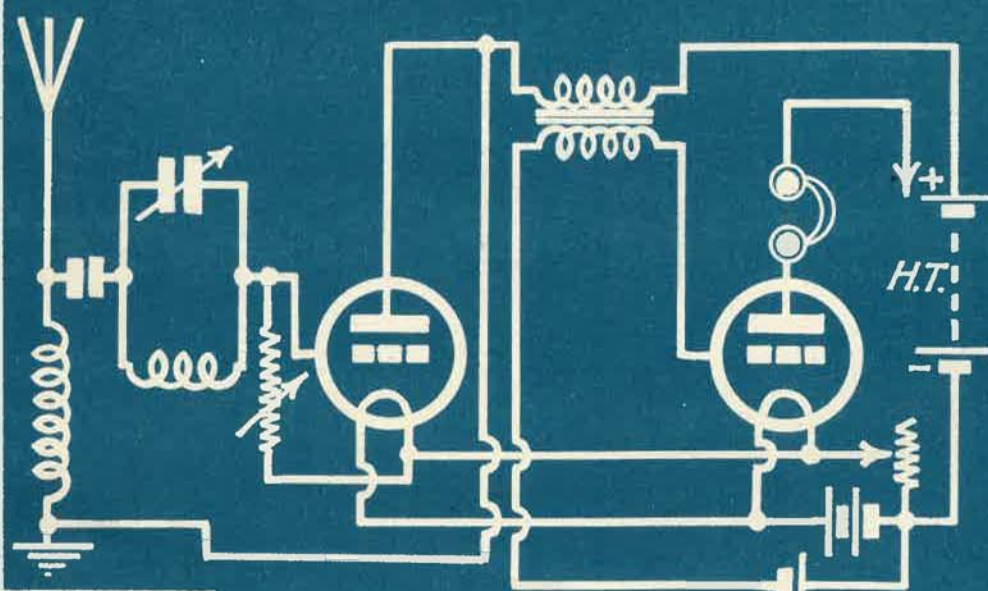
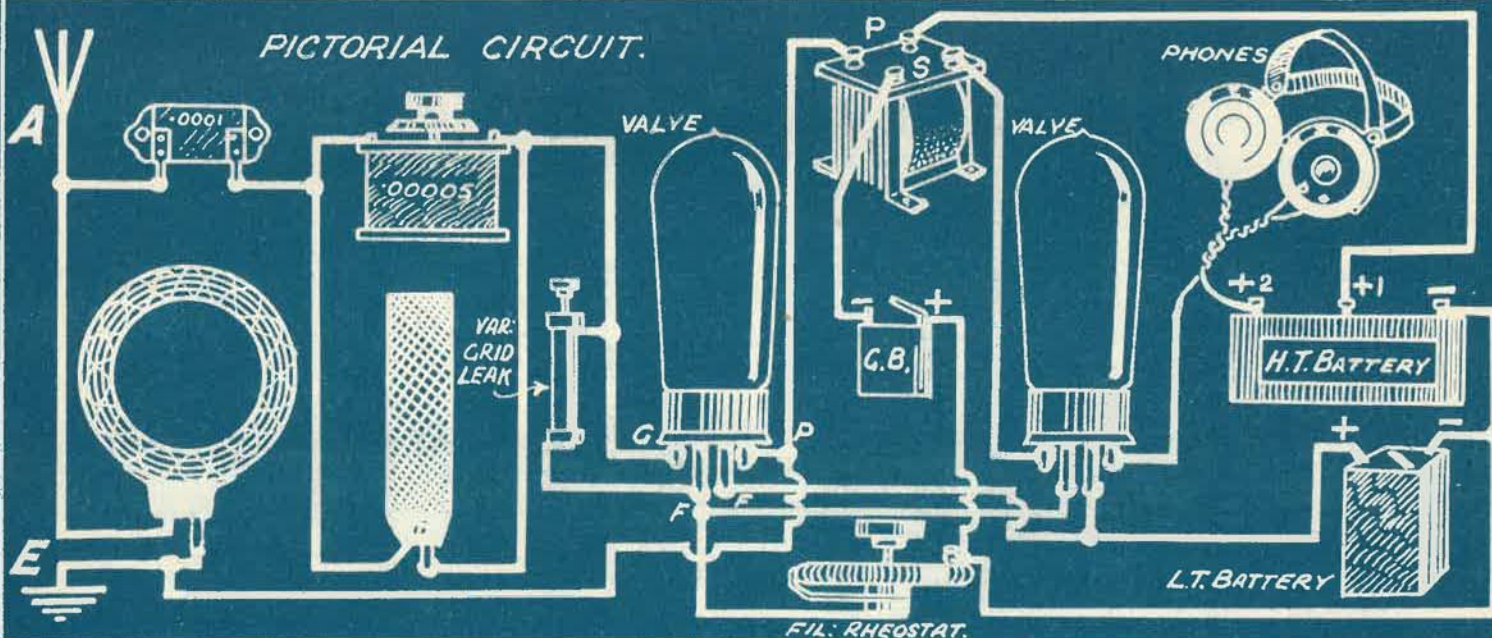


6d.



DRAWN BY	W.D.
CHECK BY	B.L.
SER. NO.	B.P. 103.

List of Components.

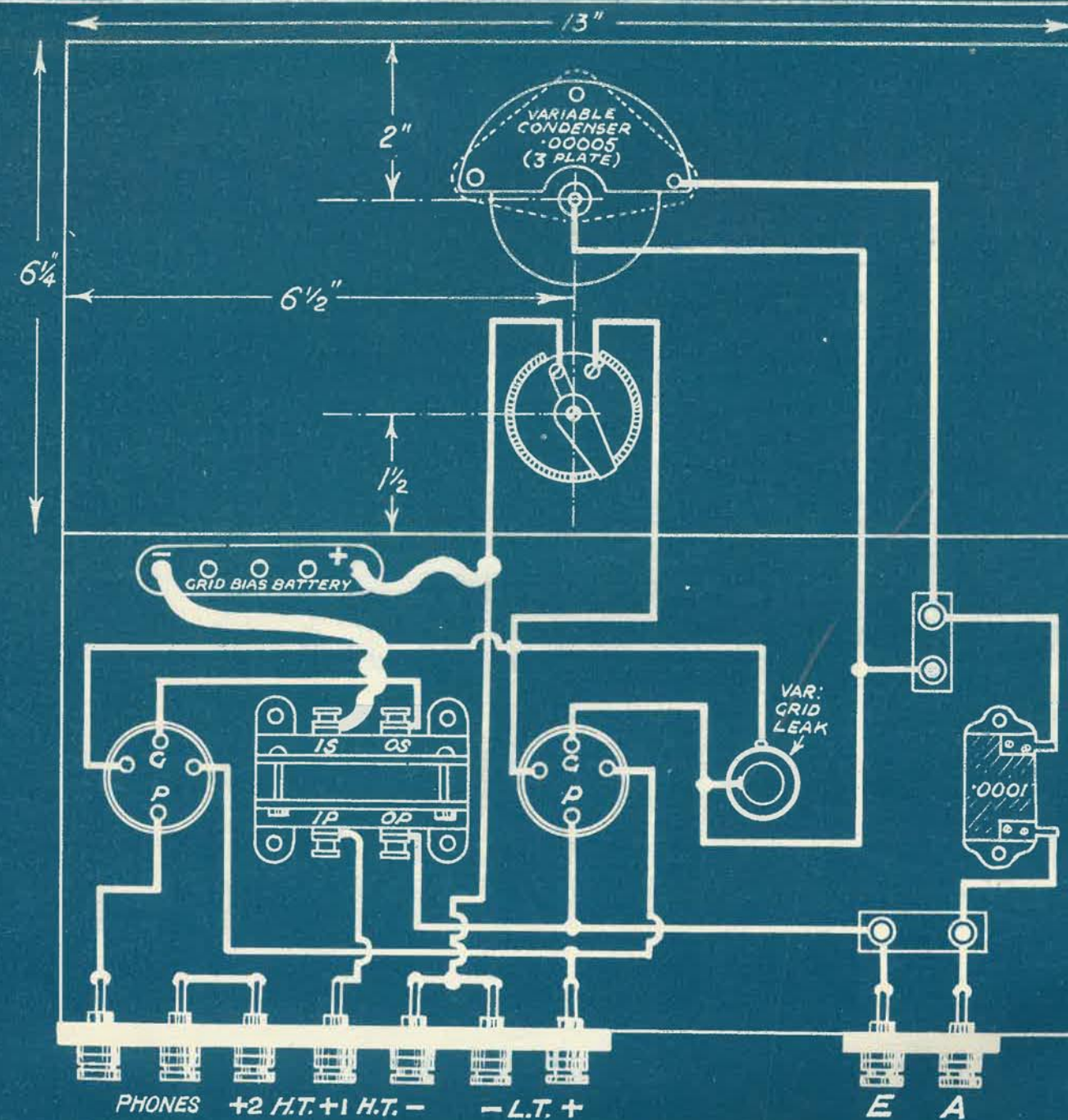
1 Special L.F. transformer (as originally specified).

- 9 Terminals.
2 Single coil holders.
2 Valve holders.
1 Rheostat.
1 Fixed condenser, .0001.
1 Variable grid leak.

Wire, screws, transfers, wander plugs,
ebonite terminal strips, etc.

Accessories.

- 2 Valves (1 detector, 1 L.F. type).
- 2 Coils (150 and 45/60).
- 1 H.T. battery.
- 1 L.T. battery. { To suit valves.
- 1 Tapped grid bias battery.
- 1 'Phones or loud speaker.



DRAWN BY	W.D.
CHKD BY	58
SER. NO	BP.104

THE "P.W." BLUE PRINT CIRCUIT, No. 21. THE TWO-VALVE LODGE "N."

This, the famous non-radiating receiver evolved by Sir Oliver Lodge, F.R.S., will give clear and powerful results from the local station, and is extremely easy to operate. The grid leak employed must be one capable of smooth variation over a wide range of resistances, but once set for the particular valve in use it may be left adjusted. The grid bias battery must be tapped at every 1½ volts, the maximum voltage available being not less than 4½. Although 'phones are shown in the diagrams, the set will operate a loud speaker up to approximately 12 miles from the local station.